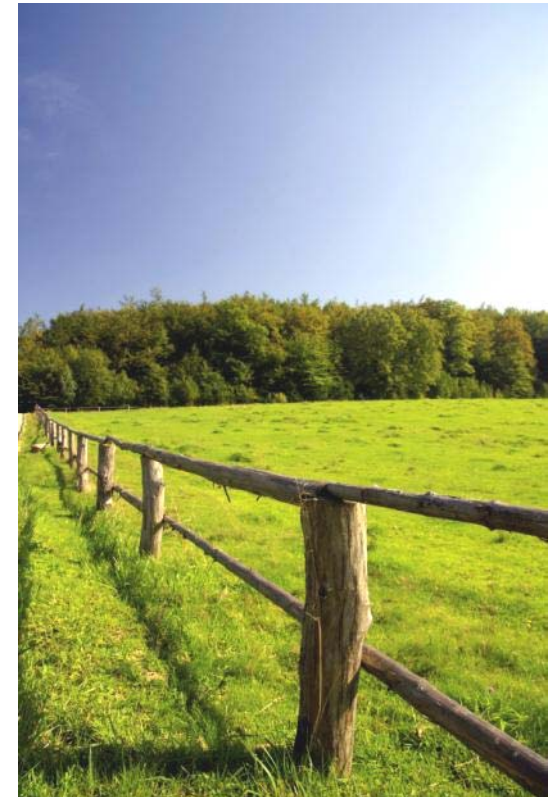




Evidence-based practice guidelines in hospitals in Australia and South East Asia

Tari Turner, Sally Green, Claire Harris





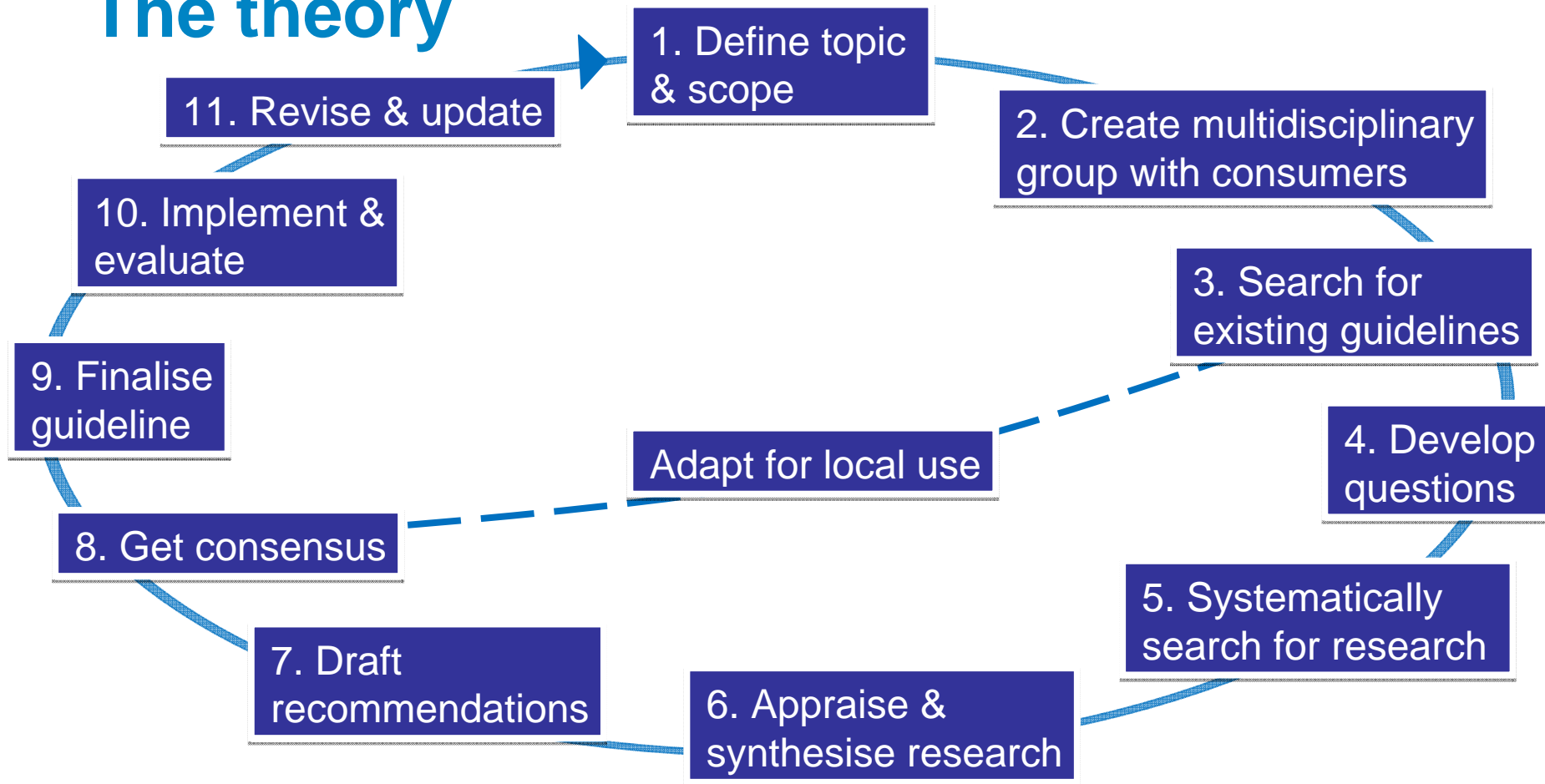
Background

- Evidence-based guideline development is being encouraged by hospitals
- Existing models of evidence-based guideline development have been designed for national programs
- Evidence-based guidelines are rarely developed in hospitals



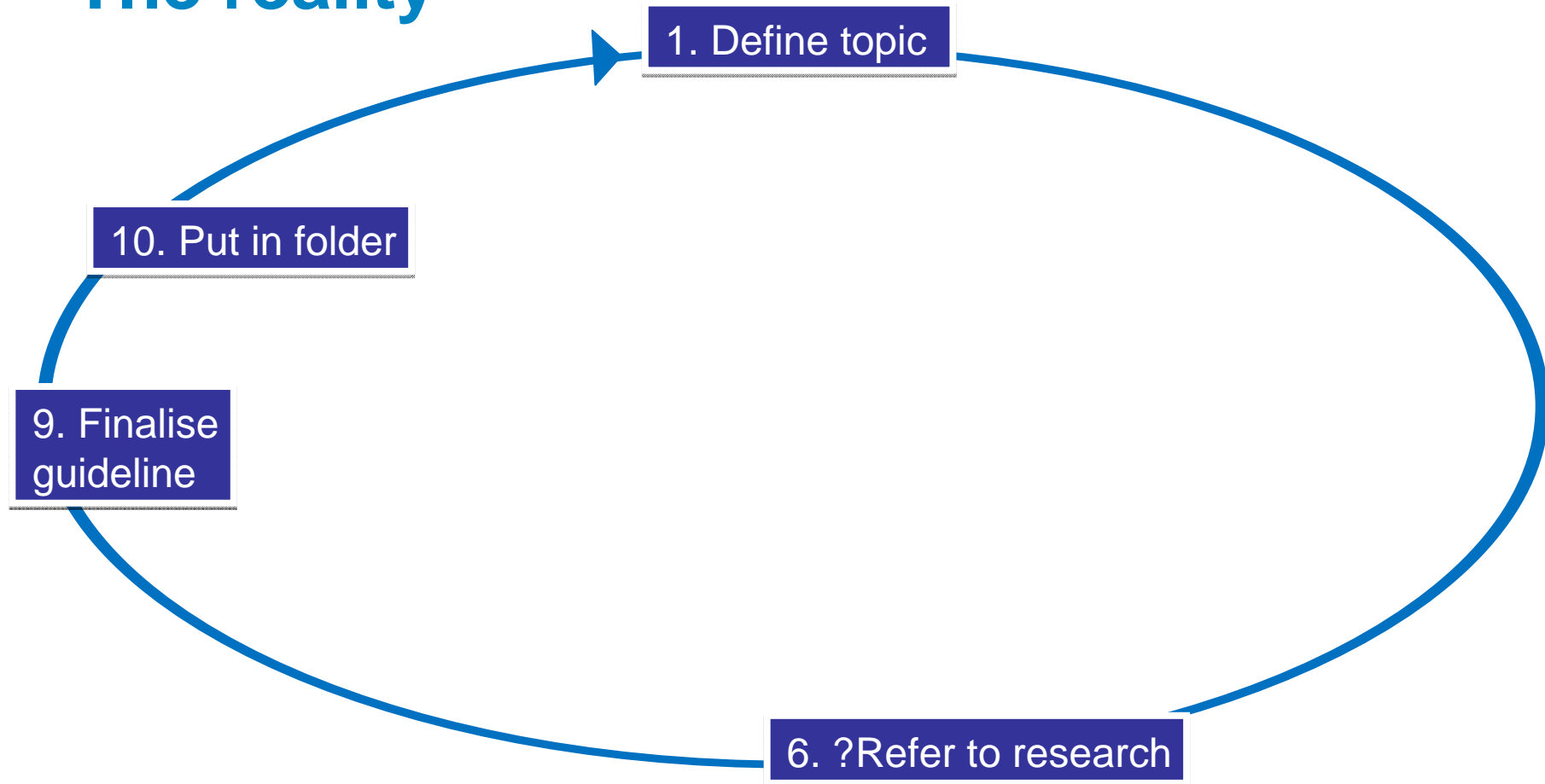


The theory





The reality





Objectives

- To inform the development of a pragmatic guideline development method appropriate for hospitals
- Interviews with clinicians about their perceptions of
 - The value of guidelines
 - The barriers to developing guidelines



Data Collection & Analysis

- Semi-structured, face-to-face interviews
- 2 hospitals in Australia, Malaysia, Indonesia, the Philippines and 3 hospitals in Thailand
- Both regional (tertiary) and district (secondary) hospitals

- 94 single, 25 pair and 11 group interviews
- Senior and junior clinicians (nurses, midwives, allied health and doctors) in perinatal hospital departments
- Interpreters used in Indonesia and Thailand
- Audio-taped and transcribed
- Thematic analysis using NVivo



Value

- **Guidelines that are:**
 - Evidence-based
 - Concise and clinically focused
 - Credible
 - Multidisciplinary
 - Up-to-date



Quotes

*I think that they're important
and I think that we need them.*
Senior Nurse

*Q: Do you think guidelines are
useful?*

*A: It is useful if you, if most of
us read them.*

*Q: Do you think they are
used?*

A: I don't think so.
Senior Doctor

*Well if they're not based on
evidence, who is saying it's the
right way to do it?*
Senior Nurse

*Q: Are those guidelines based
on research?*

*A: Based on experience. ...The
researches, we try to look up
...but mostly we tend to come up
with based on our experiences.*
Senior Doctor



Quotes

I quite like structures where the guideline exists in several layers. There's a very simple layer which is your day-to-day decision making where you don't necessarily even want to understand what underpins it. But you can dig deeper and deeper as you wish to
Senior Doctor

I've become more and more disenchanted with the preparation of clinical guidelines ... because I get the sense that clinical practice guidelines in my hospital are written for administrators and for key performance indicators
Senior Doctor



Barriers to developing guidelines

- Lack of
 - Time
 - Skills
 - Access to evidence
- Difficulty arranging meetings and achieving consensus



Quotes

*Making a guideline from scratch is a whole lot of work, ...according to the book it takes it's a process of years.
Senior Doctor*

*There's just not enough time. We're busy enough as it is caring on the floor let alone being allotted the time to develop these guidelines.
Senior Nurse*

*We have internet access here, but our computer is non-functional right now. ... we're using only one for about 50 people actually.
Junior Doctor*

*Q: In this unit, does your team have the skills that they need to, if time wasn't an issue?
A: Well the obvious answer to that is no.
Senior Doctor*



Quotes

A: In our case, we are stopping the guidelines because there have been some problems

Q: So you've had to stop for a while, is it for clinical reasons?

*A: No, not the clinical reason. I think it's more on conflicting ideas.
Junior Doctor*

The issue is trying to coordinate people, because everybody has their own schedule, and trying to get those people together.

Junior Doctor

Q: Are nurses involved in writing the protocols?

A: No. Consultants. Consultants and the specialists they are the ones who go in a closed room I think. ... Then they come up with the protocol.

Senior Nurse



Conclusion

- Guidelines are valued by clinicians, but there are substantial barriers to their development
- Most barriers are shared across settings
- A more achievable approach to guideline development is needed if they are to be developed regularly in hospitals.





Policy implications

- Need a more achievable approach to guideline development in hospital settings or an entirely new approach to supporting evidence-based practice
- Significant resource issues





Thanks

Tari Turner

Centre for Clinical Effectiveness, Southern Health
Monash Institute of Health Services Research

Monash Medical Centre, Melbourne, Australia

tari.turner@med.monash.edu.au