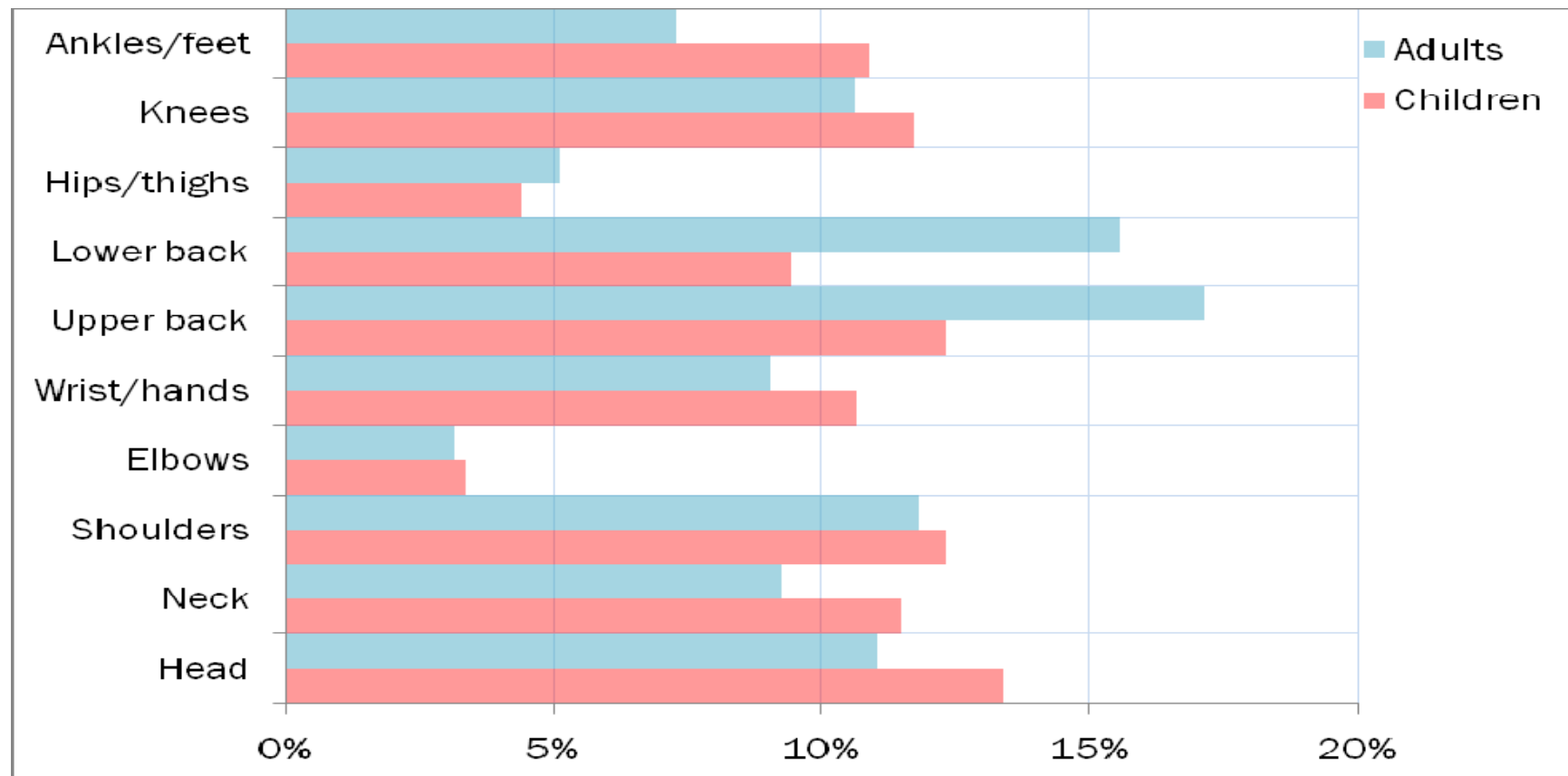
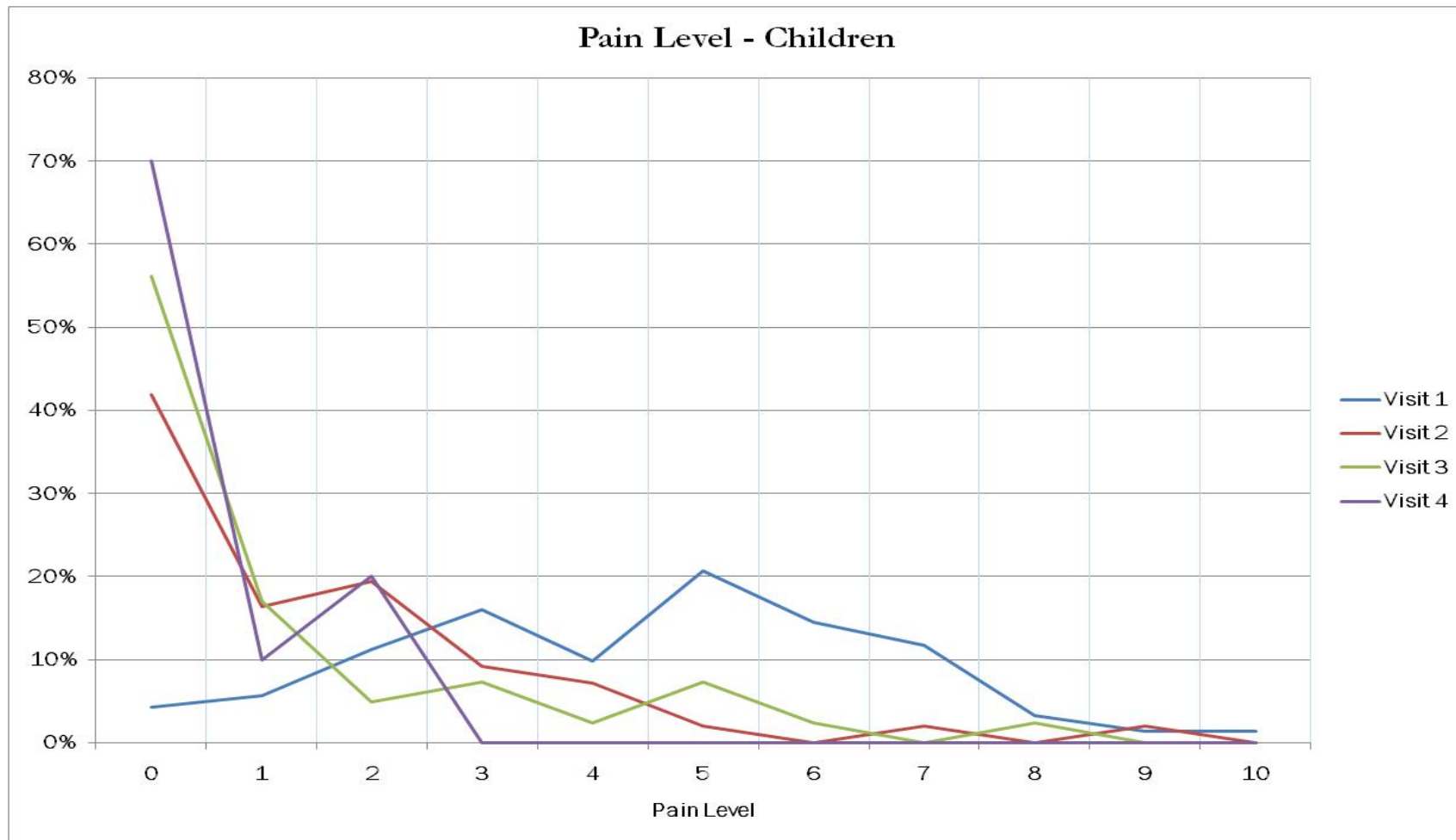


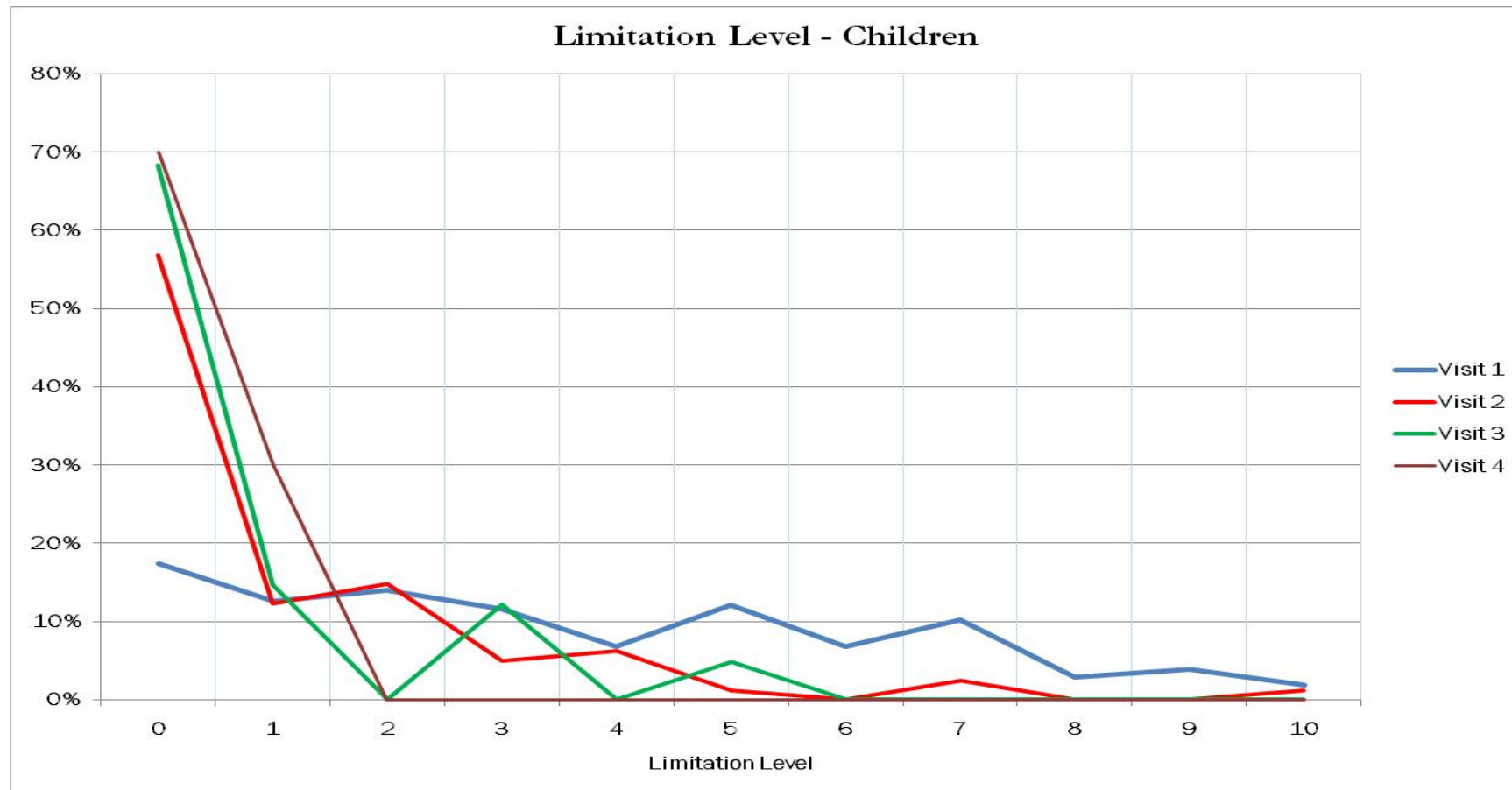
# Comparison of musculoskeletal pain for children and adults over the 7 days prior to the study



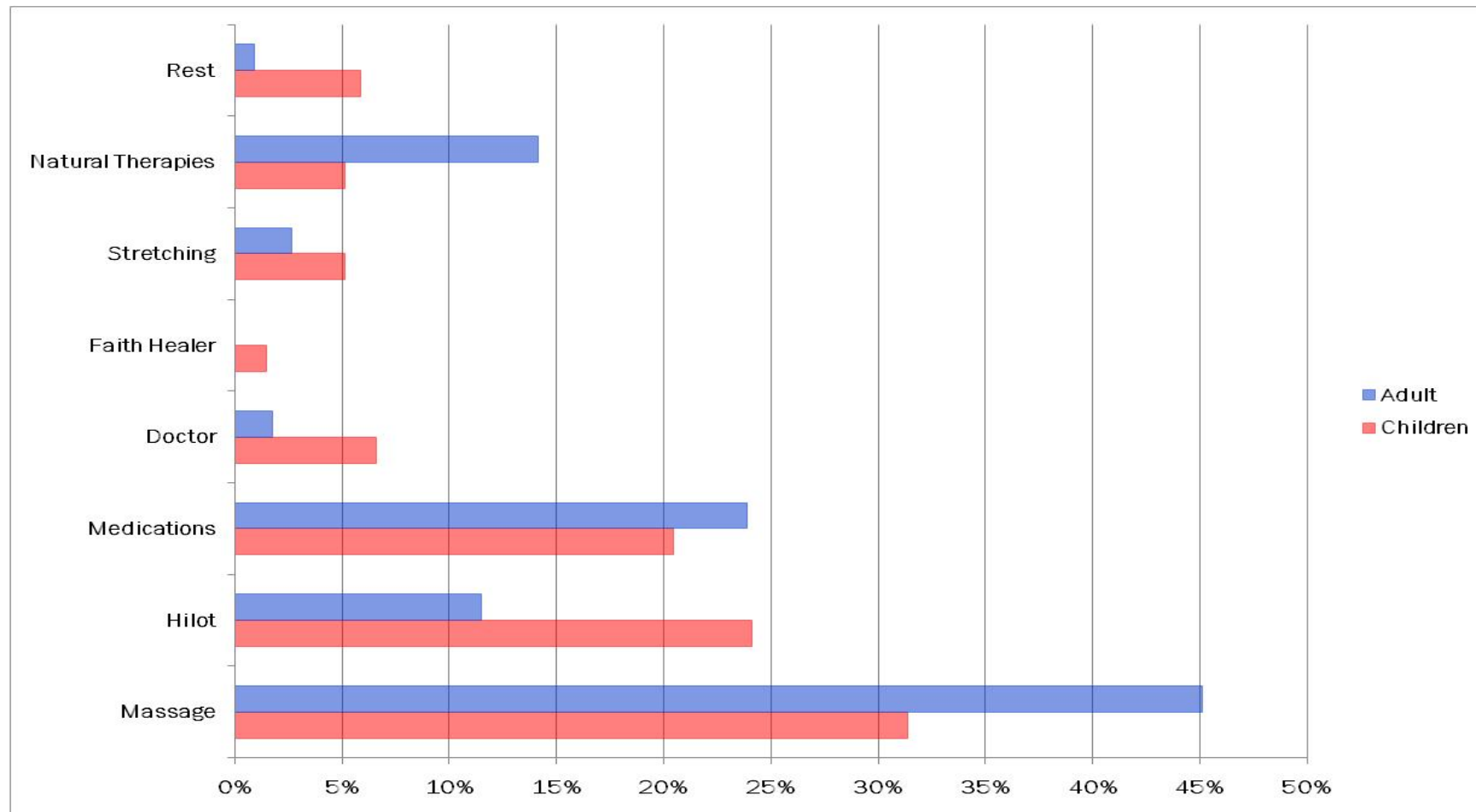
# Comparison of pain levels for children visits 1 -4, 7 days prior to the study



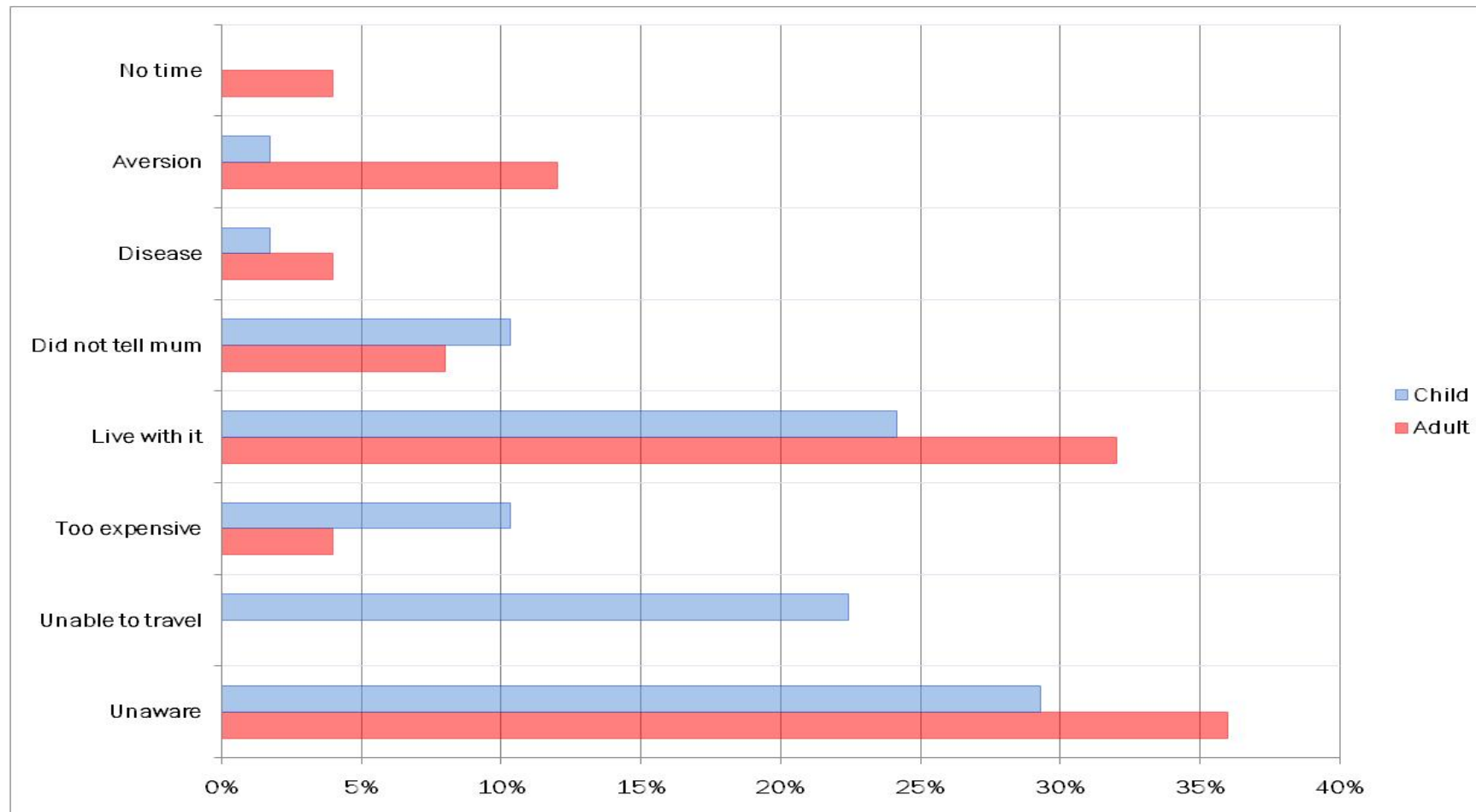
# Comparison of limitation levels for children, 7 days prior to the study , visits 1-4.



# Comparison of types of treatment children and adults



# Comparison of reasons for no treatment for children and adults



# GENERAL DATA

	ADULTS	CHILDREN
PREVIOUS INJURY	30%	20%
PAST MUSCULOSKELETAL CONDITION	80%	50%
MUSCULOSKELETAL CONDITIONS LESS THAN 1 YEAR PREVIOUSLY	40%	65%
MUSCULOSKELETAL CONDITION LESS THAN 7 WEEKS PREVIOUSLY	65%	40%
PREVIOUS TREATMENT	80%	65%

# BASECO HOUSES



# BASECO STREET



# POLICY IMPLICATIONS

- Policy implications include the development of a research model that can be adapted and implemented in other marginalised communities.
- Also, the implementation of a sustainable, long-term chiropractic programme, supported by evidence of efficacy that is available to disadvantaged communities throughout South-East Asia and around the world.
- Participatory Action Research (PAR) will ensure that practitioners and the community are included as part of the research team and that the program remains sensitive and responsive to the community that it serves.